

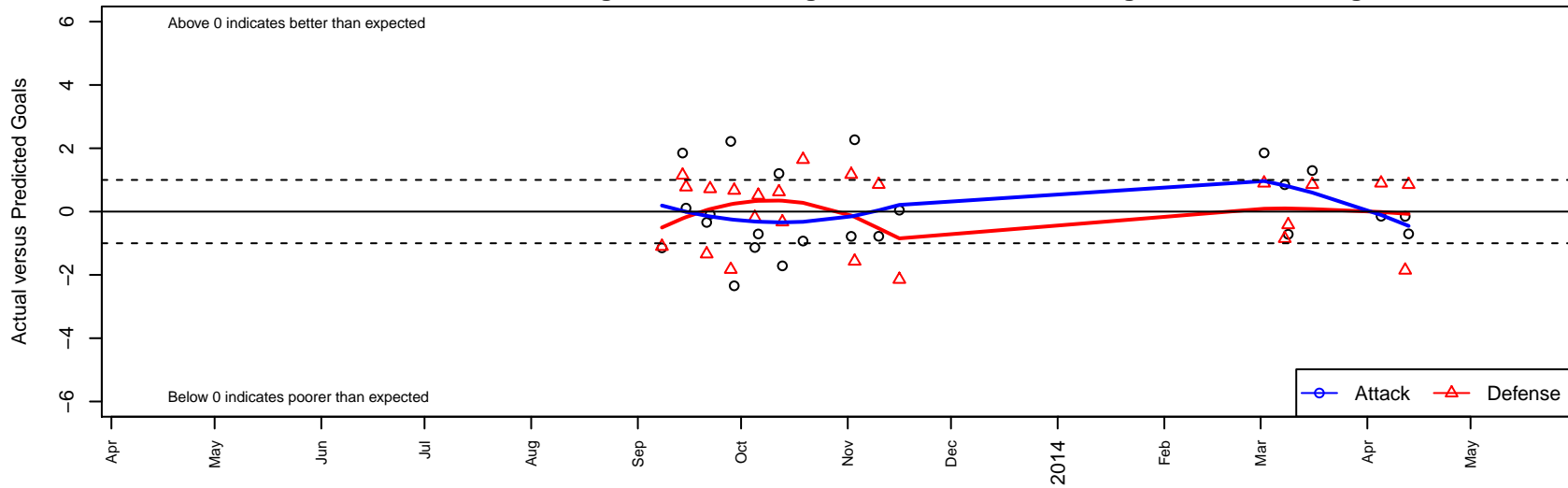
CUSC Red B02

Clackamas United SC
 Clackamas, OR
 B02 total strength=366
 attack=0.27 defense=0.18
 fall league = OPL Second Division U11, OPL D
 notes= Crossfire Oregon
 alt names used:
 Crossfire OR Clackamas United SC Crossfire-

Venues played:
 OPL Second Division U11
 OPL Directors Cup Silver U11
 Spr OPL Chinook Division U11



CUSC Red B02
 Dots are actual minus expected GF (blue circles) and GA (red triangles).
 Blue line is smoothed change in attack strength. Red is smoothed change in defense strength.



	date	home		away		venue	pred.home	pred.away
26295	2014-04-13	CUSC Red B02	1	HSC United B02	1	Spr OPL Chinook Division U11	1.70	1.85
26002	2014-04-12	CUSC Red B02	2	NEU Barca Blue B02	3	Spr OPL Chinook Division U11	2.15	1.15
25603	2014-04-05	Thelo Spartans B02	1	CUSC Red B02	1	Spr OPL Chinook Division U11	1.90	1.15
24888	2014-03-16	HSC United B02	1	CUSC Red B02	3	Spr OPL Chinook Division U11	1.85	1.70
24186	2014-03-09	CUSC Red B02	1	Foothills SC Celtic B02	2	Spr OPL Chinook Division U11	1.72	1.58
23847	2014-03-08	NEU Barca Blue B02	2	CUSC Red B02	3	Spr OPL Chinook Division U11	1.15	2.15
23653	2014-03-02	CUSC Red B02	3	Thelo Spartans B02	1	Spr OPL Chinook Division U11	1.15	1.90
18354	2013-11-16	CUSC Red B02	2	River Plate SC Racers B02	5	OPL Directors Cup Silver U11	1.96	2.86
17998	2013-11-10	PCU Black B02	0	CUSC Red B02	1	OPL Directors Cup Silver U11	0.86	1.78
17140	2013-11-03	CUSC Red B02	4	FC Salmon Creek Avalanche B02	4	OPL Directors Cup Silver U11	1.73	2.43
16585	2013-11-02	CUSC Red B02	2	THUSC Beryllium Green B02	0	OPL Directors Cup Silver U11	2.78	1.17
14763	2013-10-19	Westside Timbers Mundial B02	0	CUSC Red B02	1	OPL Second Division U11	1.64	1.93
14273	2013-10-13	CUSC Red B02	1	FC Portland White B02	1	OPL Second Division U11	2.71	0.67
13721	2013-10-12	CUSC Red B02	4	Southside SC Chaos B02	0	OPL Second Division U11	2.80	0.62
13209	2013-10-06	WUSC Manchester United White B02	1	CUSC Red B02	1	OPL Second Division U11	1.51	1.71
12675	2013-10-05	CUSC Red B02	0	Eastside Timbers White B02	2	OPL Second Division U11	1.13	1.81
12256	2013-09-29	HSC Phoenix B02	0	CUSC Red B02	2	OPL Second Division U11	0.67	4.34
11773	2013-09-28	CUSC Red B02	5	THUSC Beryllium Green B02	3	OPL Second Division U11	2.78	1.17
11328	2013-09-22	CUSC Red B02	2	FC Salmon Creek Juventus B02	0	OPL Second Division U11	2.08	0.72
10799	2013-09-21	Pacific FC Revolution B02	4	CUSC Red B02	2	OPL Second Division U11	2.66	2.34
10371	2013-09-15	CUSC Red B02	2	Valley Futball Club Avengers B02	0	OPL Second Division U11	1.89	0.78
9828	2013-09-14	CUSC Red B02	4	NEU Barca Blue B02	0	OPL Second Division U11	2.15	1.15
9406	2013-09-08	Thelo Spartans B02	3	CUSC Red B02	0	OPL Second Division U11	1.90	1.15